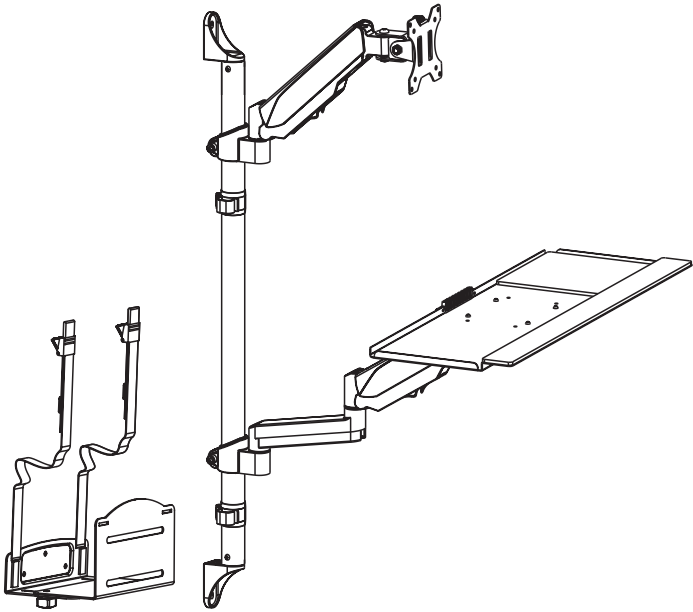




Sit to Stand Single Monitor Wall Mount Workstation Instruction Manual



SKU: STAND-SIT1BW



Scan the QR code with your mobile device or follow the link for helpful videos and specifications related to this product.

<https://vivo-us.com/products/stand-sit1bw>

GET IN TOUCH | Monday-Friday from 7:00am-7:00pm CST



help@vivo-us.com



www.vivo-us.com
Chat live with an agent!



309-278-5303

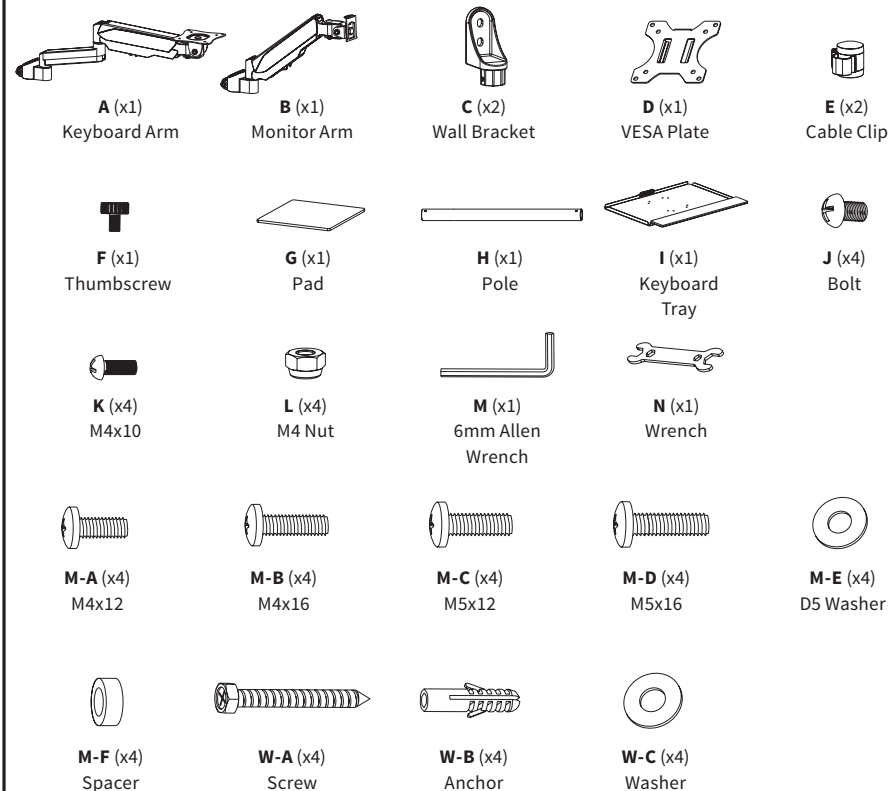
⚠ WARNING!

If you do not understand these directions, or if you have any doubts about the safety of the installation, please call a qualified technician. Check carefully to make sure there are no missing or defective parts. Improper installation may cause damage or serious injury. Do not use this product for any purpose that is not explicitly specified in this manual. Do not exceed weight capacity. We cannot be liable for damage or injury caused by improper mounting, incorrect assembly or inappropriate use.

⚠ WARNING: CHOKING HAZARD

SMALL PARTS - NOT FOR CHILDREN UNDER 3 YEARS. ADULT SUPERVISION IS REQUIRED.

PACKAGE CONTENTS



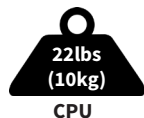
NOTE: NOT ALL HARDWARE INCLUDED WILL BE USED

TOOLS NEEDED



DO NOT EXCEED WEIGHT CAPACITY.

Failure to do so may result in serious injury.

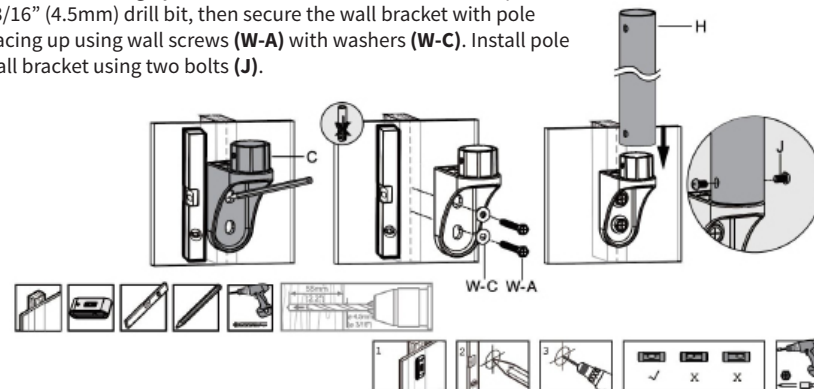


ASSEMBLY STEPS

STEP 1

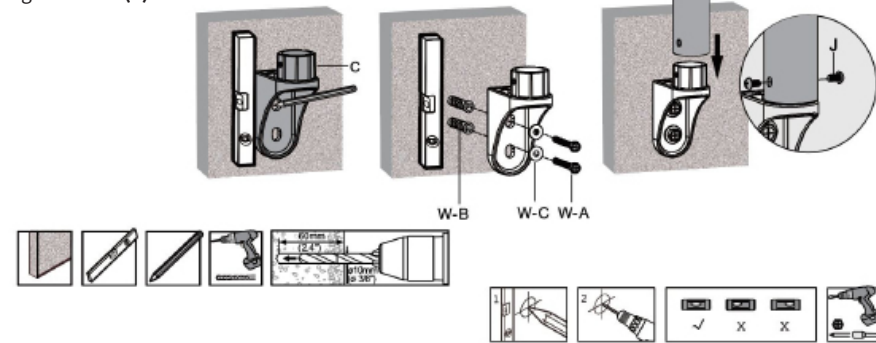
OPTION A: Wood Wall Installation

Using holes in wall bracket (C) as a guide, mark drilling locations on wall. Use of a stud finder is highly recommended. Drill 2.2" (55mm) deep holes using a 3/16" (4.5mm) drill bit, then secure the wall bracket with pole mount facing up using wall screws (W-A) with washers (W-C). Install pole (H) to wall bracket using two bolts (J).



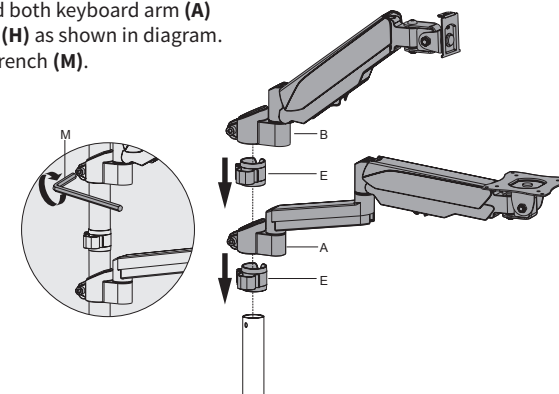
OPTION B: Concrete/Brick Wall Installation

Using holes in wall bracket (C) as a guide, mark drilling locations on wall. Drill 2.4" (60mm) deep holes using a 3/8" (10mm) drill bit and press anchors (W-B) into holes, then secure the wall bracket with pole mount facing up using wall screws (W-A) with washers (W-C). Install pole (H) to wall bracket using two bolts (J).



STEP 2

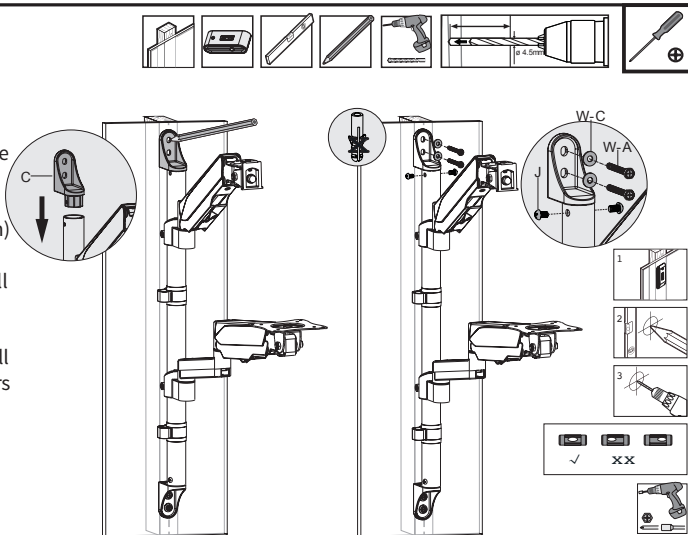
Slide cable management clips (E) and both keyboard arm (A) and monitor arm (B) over top of pole (H) as shown in diagram. Secure both arms using 6mm Allen wrench (M).



STEP 3

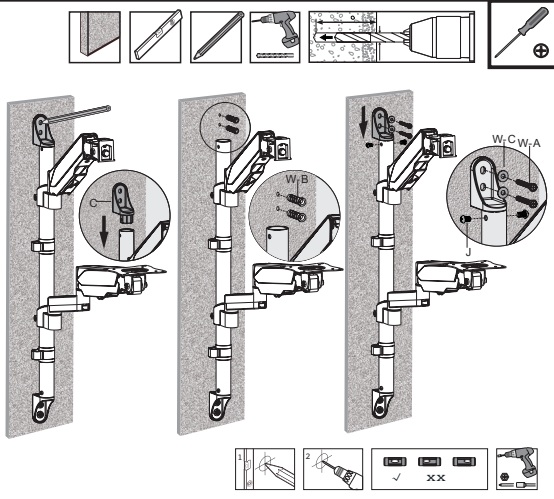
OPTION A: Wood Wall

Place wall bracket (C) on top of pole (H) and making sure pole is perfectly straight, mark drilling locations. Remove wall bracket and use stud finder to confirm stud location. Drill 2.2" (55mm) deep holes using a 3/16" (4.5mm) drill bit. Reinstall wall bracket to pole with two bolts (J), then secure the wall bracket using wall screws (W-A) with washers (W-C).



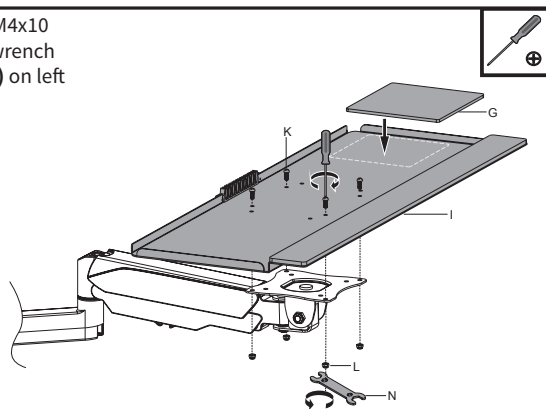
OPTION B: Concrete Wall

Place wall bracket (C) on top of pole (H) and making sure pole is perfectly straight, mark drilling locations. Remove wall bracket. Drill 2.4" (60mm) deep holes using a 3/8" (10mm) drill bit and press anchors (W-B) into holes. Reinstall wall bracket to pole with two bolts (J), then secure the wall bracket using wall screws (W-A) with washers (W-C).



STEP 4

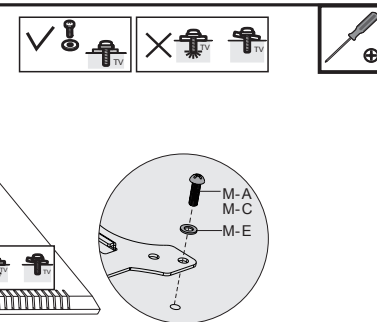
Attach keyboard tray (I) to arm (A) using M4x10 bolts (K) and M4 nuts (L). Tighten using wrench (N) and Phillips screwdriver. Place pad (G) on left or right side of keyboard tray.



STEP 5

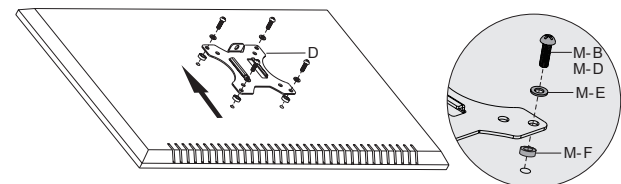
OPTION A: Flat Back Monitor

Attach VESA plate (D) to back of monitor using bolts (M-A, M-C) and washers (M-E).



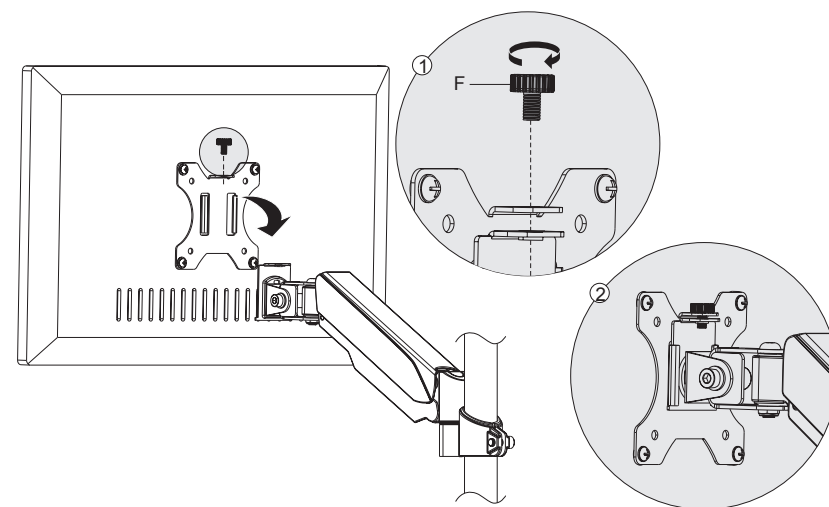
OPTION B: Curved/Recessed Back Monitor

Attach VESA plate (D) to back of monitor using bolts (M-B, M-D), washers (M-E) and spacers (M-F).



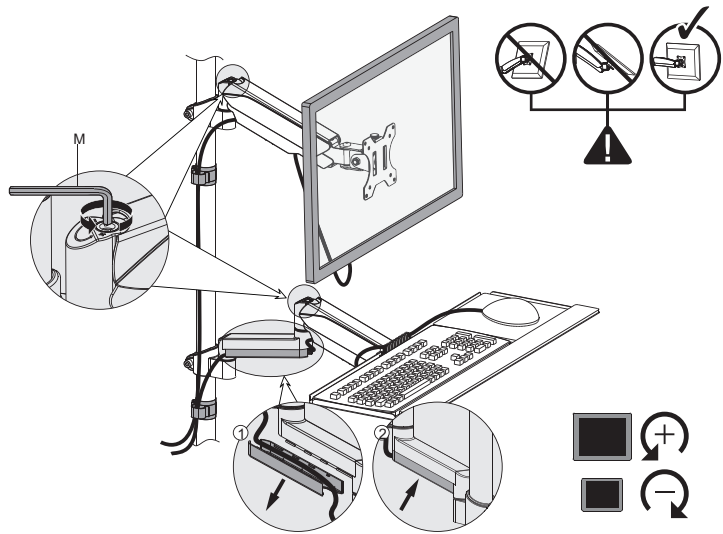
STEP 6

Slide VESA plate (D) onto arm (B). Secure using thumb screw (F) as shown in diagram.



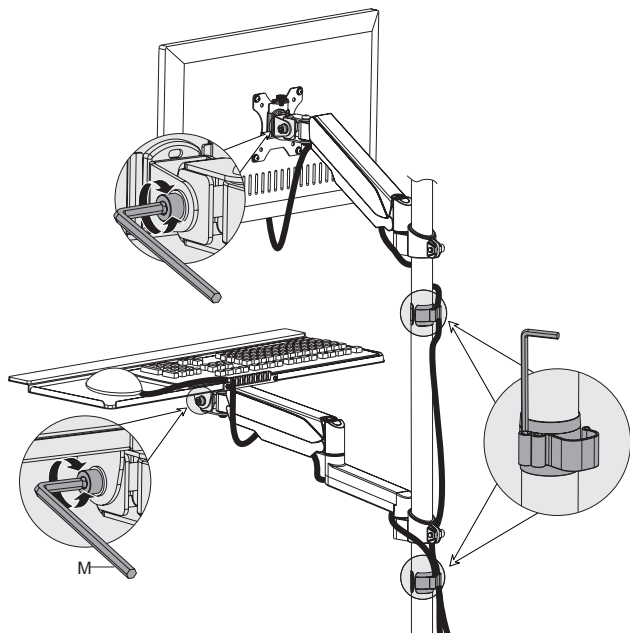
STEP 7

Adjust the tension of monitor and keyboard arms using 6mm Allen wrench (**M**). Remove the bottom covers as shown in diagram and run cables through. Reattach cable cover.

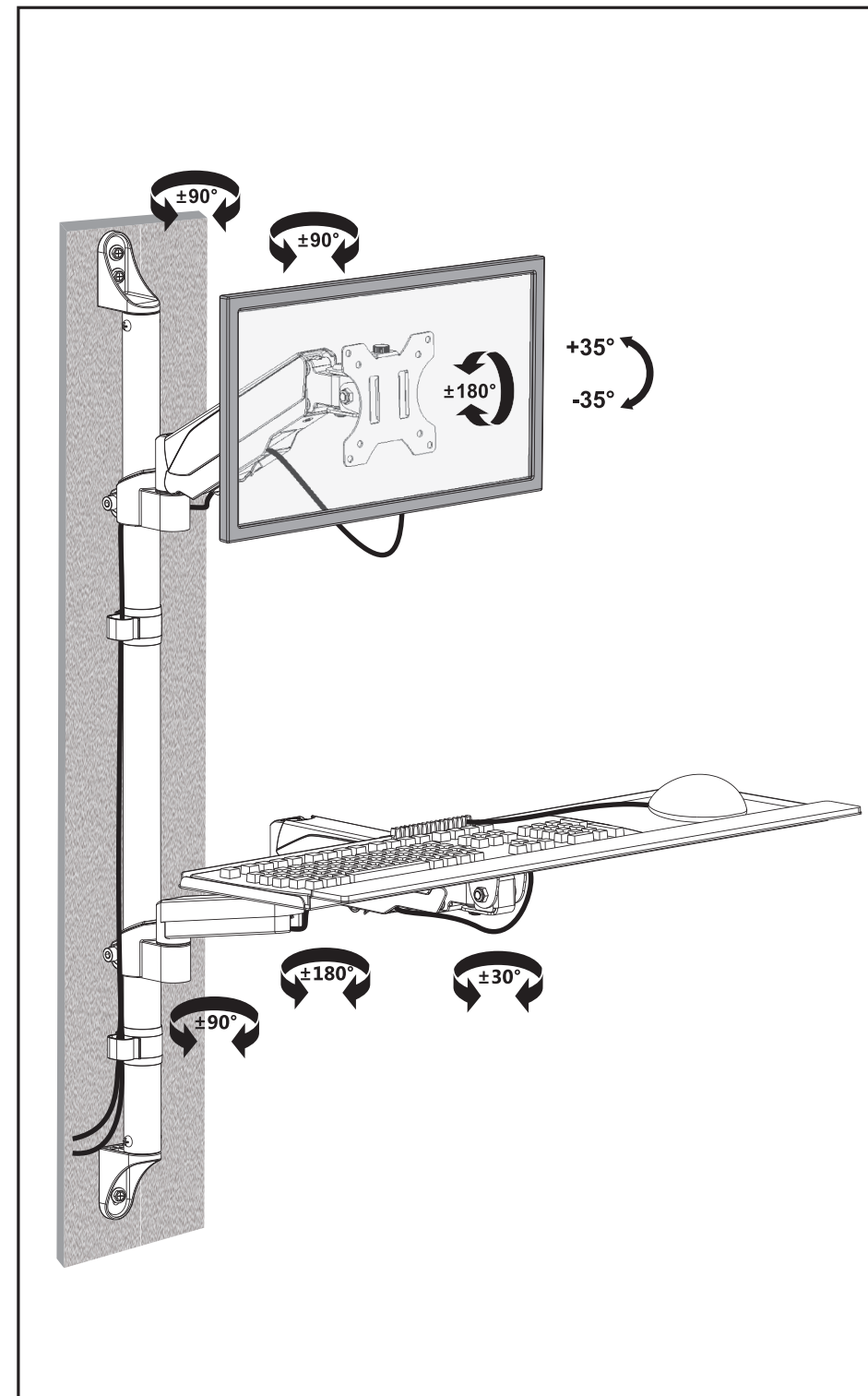



STEP 8

Adjust tension in both tilt brackets using 6mm Allen wrench (**M**) to hold monitor and keyboard at desired angles. Run cables through cable management clips (**E**) and store Allen wrench in clip.



Adjust as Desired



 Love your new VIVO setup and want to share?
Tag us in your photo! [@vivo_us](#)

LAST UPDATED: 03/30/2020




Open **Monday - Friday 7:00am - 7:00pm** CST,

our dedicated support team can offer immediate assistance with rapid response times. If any parts are received damaged or defective, please contact us. We are happy to replace parts to ensure you have a fully functioning product.


 help@vivo-us.com

AVG. RESPONSE TIME (*within office hrs*): **1HR 8M**

- 23% within < 15m
- 38% within < 30m
- 61% within < 1hr
- 83% within < 2hr
- 92% within < 3hr

 www.vivo-us.com
Chat live with an agent!

AVG. RESOLUTION TIME (*within office hrs*): **< 15 M**

 309-278-5303

AVG. RESOLUTION TIME (*within office hrs*): **5M 4S**

FOR MORE VIVO PRODUCTS, CHECK OUT OUR WEBSITE AT: www.vivo-us.com